

# SAVED by the CELL

## e-NEWSLETTER



The National Stem Cell Foundation funds, promotes and supports collaboration in the field of adult stem cell research and regenerative repair.

### IN THIS ISSUE...

Research PARTNERS  
RESEARCHer SPOTLIGHT  
PATIENT ADVOCACY  
WEIRD SCIENCE  
ART MEETS SCIENCE  
FUNDRAISING Partners  
PROJECTS IN DEVELOPMENT  
SUPPORT NSCF WHEN YOU SHOP!

### Welcome to the National Stem Cell Foundation newsletter!

We will update you regularly on progress being made in the research we fund and bring you timely news on issues at the forefront of regenerative medicine. We'll share information on our latest partnerships, projects and initiatives and report on advances that are changing healthcare every day.

At NSCF, we focus our time and attention in 4 areas: Autoimmune Disease, Neurodegenerative Disease, Rare Childhood Disorders and Regenerative Repair. We partner with others to leverage our funds and bring everyone to the table - researchers, patients, academic institutions and biotech companies.

We believe that to find and fund breakthrough research, collaboration is critical. We are committed to partnering with strong organizations and building consortiums to get great research through the "valley of death" that is too often the fate of promising ideas. Our goal is to fund the most promising developments emerging in the field of regenerative medicine, fund new collaborative research in our focus areas and accelerate access to scientific breakthroughs.

The following is an outline of our 2015 progress to date.



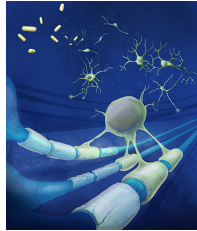
Paula Grisanti, Chair  
National Stem Cell Foundation

**FUND CURES. CHANGE LIVES.  
DONATE NOW.**

Research PARTNERS

Body Building with OREF

NSCF and the Orthopaedic Research and Education Foundation (OREF) partner on \$500,000 project to fund research aimed at regenerating cartilage, bone, muscle and tendons. Researchers at UNC Chapel Hill, UCSF and University of Wisconsin selected for funding. [Click here](#) for more information.



### Regenerating Myelin with the National MS Society

NSCF and the National MS Society announce \$1M partnership on Myelin Repair Project. Researchers at Stanford and the Uniformed Services University of the Health Sciences selected for funding. [Click here](#) for more information.

### Funding Advances at MD Anderson

NSCF researcher makes breakthrough in treatment of patients with resistant T-cell lymphoma. [Click here](#) for more information.

### NSCF is funding research nationally



[CLICK HERE TO LEARN MORE ABOUT NSCF FUNDED RESEARCH: PAST AND PRESENT](#)

### RESEARCHer SPOTLIGHT

#### Interview with Dr. Marius Wernig, Stanford University

Originally from Innsbruck, Austria, Dr. Wernig directs the Marius Wernig Lab at Stanford University's Institute of Stem Cell Biology and Regenerative Medicine. [Click here](#) to learn more about Dr. Wernig's work to regenerate myelin.



### PATIENT ADVOCACY



### On the Road with S.A.M.

Sisters Alex and Sam Kimura are on a quest to add 50,000 new donors to the National Bone Marrow Donor Registry - from all 50 states. *Sharing America's Marrow* - S.A.M. - was founded after Sam Kimura was diagnosed with severe aplastic anemia and couldn't find a bone marrow donor match. NSCF helps fund their journey - you can follow it [here](#). #50K50states

[Click here](#) to see Alex and Sam interviewed on CBS News.

## WEIRD SCIENCE

### Did You Know?

Scientists at Case Western Reserve and George Washington University discovered that two over-the-counter creams - an anti fungal commonly used to treat athlete's foot and a steroid used to treat eczema - stimulate stem cells in the brain to repair white matter (myelin) damaged by MS. Seriously? See article [here](#).

## ART MEETS SCIENCE

Come Visit Us! And enjoy our gallery photo wall where art meets science.



## FUNDRAISING Partners

### Tapping into 100 Million Online Gamers with Twitch

NSCF was chosen by Twitch.tv as the recipient of a 24-hour Minecraft marathon which took place June 5th-6th. Twitch is the world's leading video platform for e-sports, ranked by the *Wall Street Journal* as the 4th largest website for peak Internet traffic in the U.S. Read more [here](#).



Called Reason2Play, you can check out press for the event [here](#) (Fortune), [here](#) (Time) and [here](#) (MedCity News)!

### Minecraft

Members of The Build Guild - top Twitch broadcasters who specialize in playing Minecraft - and Minecraft fans worldwide played for a 24-hour period to raise funds and awareness for research funded by NSCF. Minecraft is the best-selling PC game of all time and one of the best-selling video games of all time. Read more [here](#).

## PROJECTS IN DEVELOPMENT

### STEM Kids

NSCF is currently in talks with universities, non-profits and the National Math and Science Initiative to determine the most appropriate way to fund advanced education for the teachers of aspiring elementary and middle school scientists. Research shows that children in this age group who become excited about science are the ones who will pursue science courses in high school - and major in science at the college

level.

NSCF plans to underwrite this program over a period of 5 years with annual evaluations and multi-year follow up for these "STEM Kids" and the teachers who inspire them.

## STEM Talks

As research advances through collaborations with others, NSCF is working to establish an annual speaker series to update the scientific and lay communities on progress made and lessons learned in the search for cell-based cures. NSCF is currently exploring formats for bringing funded researchers and others together annually for a panel discussion to be recorded live.

## SUPPORT NSCF WHEN YOU SHOP!

### Amazon Smile

Sign up to support the National Stem Cell Foundation every time you shop on Amazon!



1. Visit [smile.amazon.com](https://smile.amazon.com)
2. Sign into your account
3. In the tab *Your Account*, select *Change Your Charity* and choose *National Stem Cell Foundation*
4. Shop using the [smile.amazon.com](https://smile.amazon.com) link and The AmazonSmile Foundation will donate 0.5% of the purchase price from your eligible purchases to NSCF.

FUND CURES.  
CHANGE LIVES.  
DONATE NOW.



### [Forward email](#)



This email was sent to [info@nationalstemcellfoundation.org](mailto:info@nationalstemcellfoundation.org) by [info@nationalstemcellfoundation.org](mailto:info@nationalstemcellfoundation.org) | [Update Profile/Email Address](#) | Rapid removal with [SafeUnsubscribe™](#) | [About our service provider](#).



National Stem Cell Foundation | 462 South Fourth Street | Suite 1230 | Louisville | KY | 40202